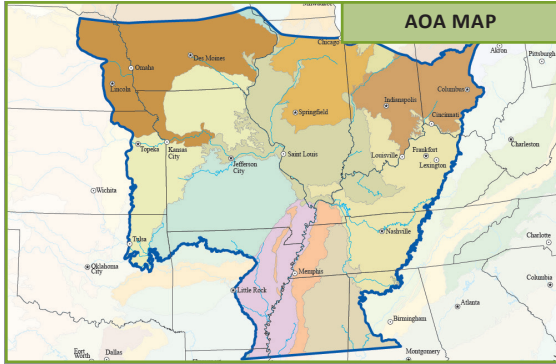


FOCUS HYBRID

2770

113
RM



2770 not only delivers high yields, but does it with high-quality grain. This top performer will consistently fill to the tip. It offers dependable standability. Plant 2770 with 3366 for a complete, agronomic package—a must on every farm within the area of adaptation.

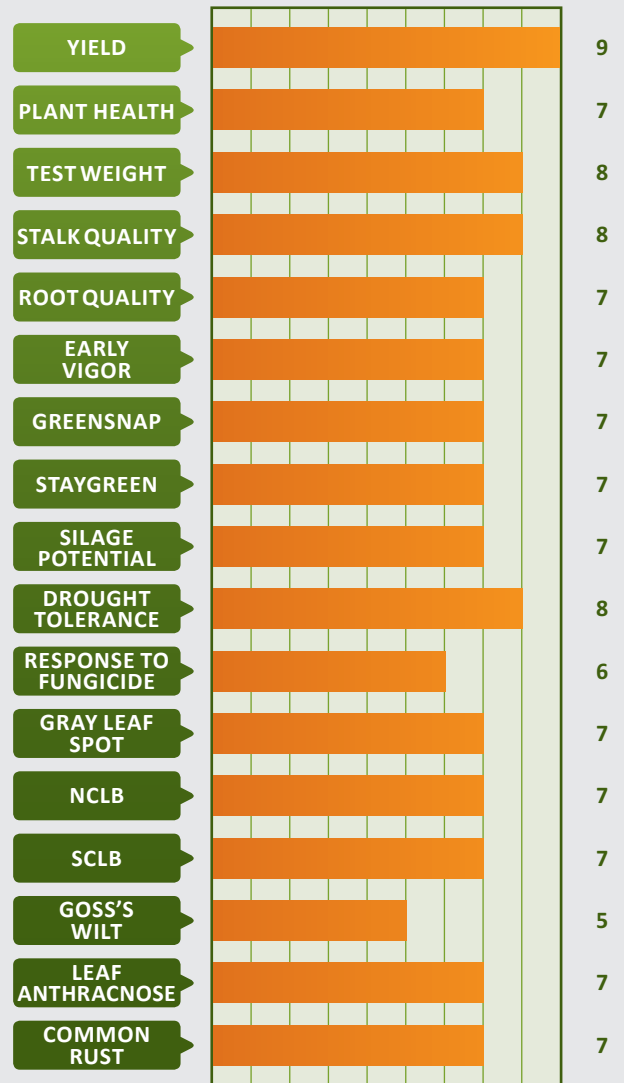
- High-yielding, medium-statured plant
- Very good grain quality and test weight
- Excellent drought tolerance and very good disease package
- Strong late-season plant health and agronomics
- Yield and stability in one package
- Widely adapted, versatile hybrid

CORN HYBRID

POSITIONING AND MANAGEMENT

2770 GDUs to Black Layer	1410 GDUs to Mid-Silk	M-H Pop. Range	32-37 Recommended Pop. x 1000
M Plant Height	SEMI-FLEX Ear Type	M Ear Height	P Cob Color
16-18 Kernel Rows	Highly Recommended Corn on Corn	Highly Recommended Conventional Tillage	Highly Recommended No-Till
Highly Recommended Timber Soil	Highly Recommended Poorly Drained Soil	Highly Recommended Sandy Soil	Highly Recommended Early Planting Date
Highly Recommended Delayed Harvest	Caution-ALS Herbicide Sensitivity		

AGRONOMICS



RATINGS KEY: 9 = OUTSTANDING 1 = POOR

- 9 Best-in-class performance in a given situation or growing environment
- 7-8 Good to very good adaptability to a given situation or growing environment
- 5-6 Average to slightly above average adaptability to a given situation or growing environment
- 4-1 Avoid using a product in a given situation or growing environment
- NA Rating not available

PLANT AND EAR HEIGHT:

- T = Tall
- M = Medium
- S = Short
- H = High
- L = Low

COB COLOR: R = Red, P = Pink, W = White

- HIGH-YIELD
- CORN-ON-CORN
- HEAT/DROUGHT-STRESSED
- POORLY DRAINED

Area of Adaptation Maps: Consult with a Pfister representative for planting outside of AOA recommendation. Pfister AOA maps are based on EPA Level III ecoregions. U.S. Environmental Protection Agency, 2013, Level III ecoregions of the continental United States: Corvallis, Oregon, U.S. EPA – National Health and Environmental Effects Research Laboratory, map scale 1:7,500,000, www.epa.gov/wed/pages/ecoregions/level_iii_iv.htm.

Pfister Seed warrants that the seed sold by it conforms to the descriptions on accompanying labels within tolerances established or permitted by law. This warranty excludes and is in lieu of all other warranties, express or implied, including any warranty of merchantability or fitness for a particular purpose, which are hereby disclaimed.

Pfister Seed, Pfister Seed Logo, Refuge Advanced and Refuge Advanced Logo are trademarks of The Dow Chemical Company (“Dow”) or an affiliated company of Dow. Always follow IRM, grain marketing and all other stewardship practices and pesticide label directions. Roundup Ready® crops contain genes that confer tolerance to glyphosate herbicides. Glyphosate herbicides will kill crops that are not tolerant to glyphosate. Bt products may not yet be registered in all states. Check with your local seed representative for registration status in your state. Roundup Ready is a trademark of Monsanto Technology LLC. LibertyLink®, Liberty® and the Water Droplet logo are registered trademarks of Bayer. Roundup Ready, Roundup Ready Logo, SmartStax, and SmartStax Logo are registered trademarks of Monsanto Technology LLC. SmartStax® multi-event technology developed by Dow AgroSciences and Monsanto. ©2015 Pfister Seed. Pfister Seed is an affiliate of Dow AgroSciences LLC.

